



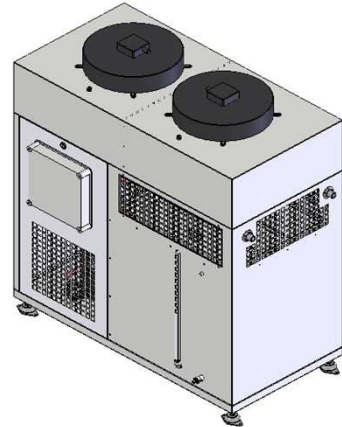
Chiller

EWOS, CWOS

EWOS = small water cooler with ice bank circulation system, open circuit  
CWOS = small water cooler with circulation system, open circuit

Explanation of model designation:

**EWOS 240**  
water cooler      capacity step



**R404A**  
**R407C**

Included:

Refrigerant circuit - compressor, condenser, liquid receiver, closing valve, filter drier, sight glass, expansion valve, coil exchanger, HP / LP pressostat, fluent fan speed regulator condenser, control switchboard.

Water circuit - circulation pump, whirl pump, stainless steel water tank, closing valves IN / OUT (G 3/4" / G 3/4"), baked epoxy powder coating.

Option: according to customer inquiry, e.g. pressure module:

Features:

Main applications:

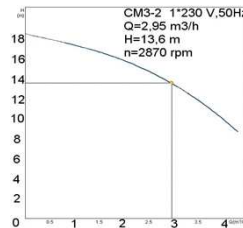
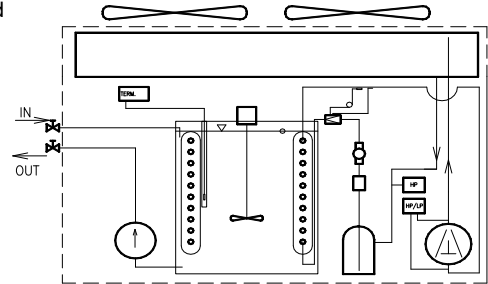
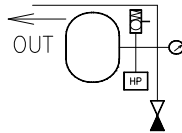
- plastics, lasers, paper, chemical,
- air conditioning, mechanical...

Water outlet:

- EWOS 0 ~ 8°C
- CWOS 5 ~ 20°C

Condition for cooling capacity:

- EWOS Amb. temp.= +25°C, Water outlet: 4°C **R404A**
- CWOS Amb. temp.= +25°C, Water outlet: 10°C **R407C**



Condition for water quantity  
EWOS from 10°C to 0°C  
CWOS from 15°C to 5°C

EWOS, CWOS													
Type	Cooling capacity (kW)	Cooled down water quantity ΔT=10K per 1 hour (L)	Compressor	Water tank (L)	Max power input (kW)	Voltage (V) 1 (3) ph 50Hz	Weight (kg)	Dimensions (m)			Total price (€)	Note	
								Length	Width	Height			
EWOS	60	1,9	150	NT 6222 GK	70	1,7	100	0,90	0,49	1,17			
	100	2,2	200	NT 6226 GK									
	160	3,8	320	NJ 9238 GK	90	3,0	230	150	1,02	0,45			1,17
	240	5,5	450	FH 4531 Z	120	4,4							
	300	7,7	640	TAG 4546 Z	200	5,8	400	240	0,12	0,60			1,13
	360	9,7	830	TAG 4561 Z									
	440	12,3	1050	TAG 4573 Z	265	7,4	295	1,30	0,60	1,30			
CWOS	60	2,4	210	AJ 5512 C	70	1,9					100	0,90	0,49
	100	3,2	260	AJ 5515 C									
	160	5,0	420	FH 5524 C	90	3,0	230	150	1,02	0,45	1,17		
	240	5,9	520	FH 5528 C	120	3,6							
	300	8,2	710	FH 5538 C	200	4,7	400	240	0,12	0,60	1,13		
	360	10,4	830	TAG 5553 C									
	440	13,6	1160	TAG 5568 C	265	7,7	295	1,30	0,60	1,30			