

Condensing unit - outdoor

CUBO

BITZER
NEW ECOLINE
semi-hermetic
reciprocating

Explanation of model example :

CUBO-L-4EES-6Y

Condensing unit	Compressor Bitzer	Outdoor	Low temperature	Type of compressor	with Ester oil
-----------------	-------------------	---------	-----------------	--------------------	----------------



R404A

0°C ~ - 15°C

M - Medium temperature

- 20°C ~ - 35°C

L - Low temperature

Suction gas superheat 10°C
Liquid subcooling 2 K
Ambient temperature 32°C

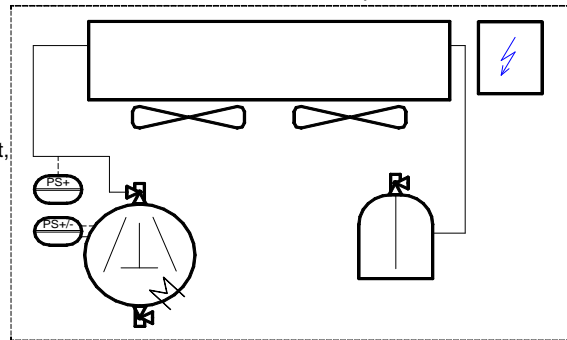
Included:

compressor with crankcase heating, air cooled condenser, liquid receiver with rotalock valve, HP/LP protection pressostat, HP condenser pressostat, frame with antivibration footing, steel covering with baked epoxy powder coating, supply switchboard, crankcase heating.

Optional:

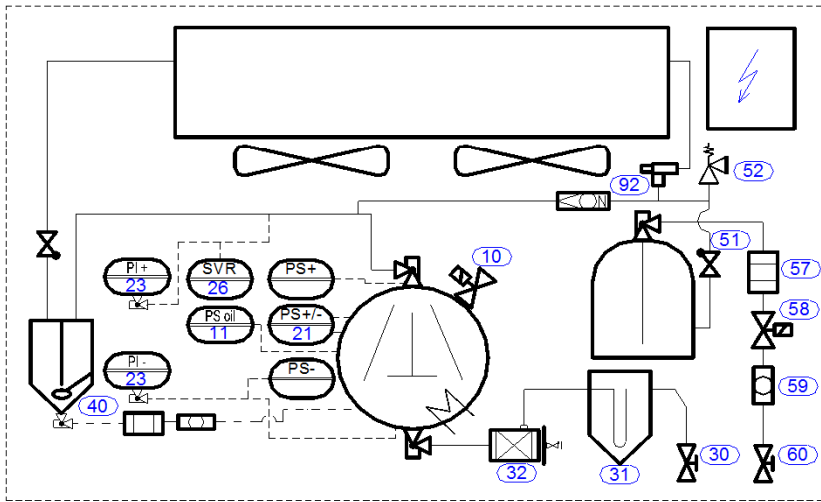
...see page P12

Scheme with included parts:



CUBO																
Type M	T.evap	Cooling capacity (kW)				Max power input (kW)	Voltage (V) 3ph 50Hz	Weight (kg)	Dimensions (m)			Total price (€)	Note			
		+5°C	0°C	-10°C	-15°C				Length	width	Height					
Type L	T.evap	-20°C	-25°C	-30°C	-35°C											
M	4EES-6Y	20,5	16,7	10,8	8,5	8,3	230...D 400...Y	216	1,20	1,10	1,10					
	4DES-7Y	24,8	20,2	13,0	10,3	9,2		225								
	4CES-9Y	30,2	24,5	15,8	12,4	12,0		290								
	M	4VES-10Y	31,9	25,8	16,3	12,6	11,7	400...YY	370	1,40	1,20	1,20				
		4TES-12Y	38,4	31,1	19,8	15,4	15,4		384							
		4PES-15Y	44,2	35,6	22,4	17,3	17,9		390				1,65	1,35	1,35	
		4NES-20Y	52,4	42,5	27,0	21,1	21,1		401							
L	4FES-3Y	5,3	4,0	3,0	2,2	5,6	230...D 400...YY	190	1,05	0,95	0,85					
	4EES-4Y	6,7	5,1	3,8	2,8	6,8		193								
	4DES-5Y	8,0	6,1	4,6	3,3	8,2		199								
	4CES-6Y	9,6	7,3	5,4	3,9	9,2		208				1,10	0,95	0,90		
	4VES-7Y	9,6	7,2	5,2	3,6	8,3	269									
	L	4TES-9Y	11,9	8,9	6,6	4,6	9,8	400...YY	293	1,20	1,10	1,10				
		4PES-12Y	13,3	9,9	7,1	4,9	12,1		361							
		4NES-14Y	16,2	12,1	8,9	6,3	14,5		373				1,40	1,20	1,20	

Optional parts condensing unit CUBO



- 10 - capacity regulator
- 11 - oil control electronic
- 13 - additional fan
- 21 - HP or LP pressostat
- 26 - fluent fan speed regulator
- 23 - pressure HP + LP gauges
- 30 - ball valve - suction
- 31 - suction accumulator
- 32 - suction filter
- 40 - oil separator + equipment ⁽¹⁾
- 51 - check valve
- 52 - relief valve
- 57 - filter drier
- 58 - solenoid
- 59 - sight glass
- 92 - KVR + NRD valves
- 60 - ball valve - liquid

⁽¹⁾... oil equipment = check valve, sight glass, strainer, ball valve

M ... - 10 / 40°C L ... - 30 / 40°C	Capacity regulator	Oil control mechanic	Oil control electronic	Additional fan	Pressure gauges	Fluent fan speed regulator	HP or LP pressostat	Ball valve	Suction accumulator	Suction filter shell + core ⁽²⁾	Oil separator + equipment ⁽¹⁾	KVR + NRD valves	Relief valve	Check valve	Filter drier	Solenoid	Sight glass	Ball valve	
	Compressor		Controls			Suction			Discharge			Liquid							
CUBO	Type / Price (€)																		
M	4EES-6Y	EVRF (50%)	MP54	Delta PII	B.Cover + OLC-K1	HP+LP	RGE-Z1N4-7DS 4A	KP1, or KP5	D28	D28	D28	D22	D22	28 bar	D22	D16	D16	D16	D16
	4DES-7Y																		
	4CES-9Y																		
	4VES-10Y																		
	4TES-12Y																		
	4PES-15Y																		
	4NES-20Y																		
L	4FES-3Y	EVRF (50%)	MP54	OLC-K1	B.Cover + OLC-K1	D250	HP+LP	RGE-Z1L4-7DS 3A	KP1, or KP5	D22	D22	D22	D22	28 bar	D22	D10	D10	D10	D10
	4EES-4Y																		
	4DES-5Y																		
	4CES-6Y																		
	4VES-7Y																		
	4TES-9Y																		
	4PES-12Y																		
	4NES-14Y																		
	RGE-Z1N4-7DS 4A	D42	D35	D28	D28	D28	D28	D28	D28	D22	D22	D22	D22	D22	D16	D16	D16	D16	