

Chiller CW, CWR, CWRO

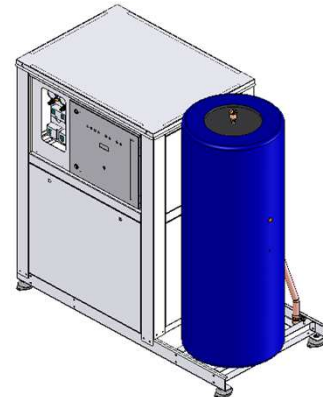
CW = small water cooler with through-flow system, closed circuit

CWR = small water cooler with circulation system, closed circuit

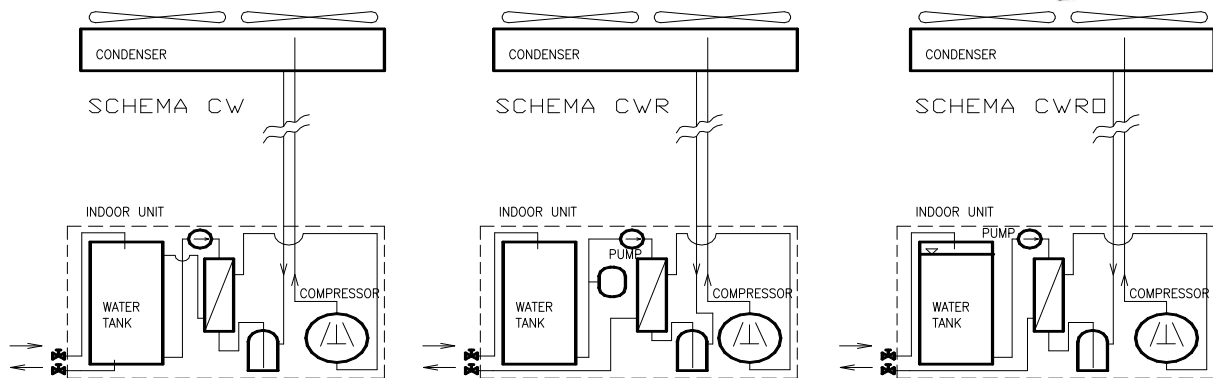
CWRO = small water cooler with circulation system, open circuit

Explanation of model designation:

C W	310
water cooler	capacity step



R407C



Included:

Refrigerant circuit - compressor, liquid receiver, closing valve, filter drier, solenoid, sight glass, expansion valve, plate exchanger, HP / LP pressostat, HP condenser pressostats (according to fans), control switchboard.

Water circuit - circulation pump, stainless steel water tank, IN / OUT closing valves (G1" / G1"), air-outlet valve, relief valve.

Baked epoxy powder coating, antivibration footing.

Features:

Water outlet 6 ~ 20°C, remote condenser.

Note: Pump characteristics (H/Q) on your request

condition for cooling capacity: $T_o/T_c \dots 3 / +44^\circ\text{C}$, R 407C

condition for water quantity from 12°C to 6°C

CW, CWR, CWRO

Type	Cooling capacity (kW)	Cooled down water quantity $\Delta T=6\text{K}$ per 1 hour (L)	Water tank (L)	Max power input (kW)	Voltage (V) 3ph 50Hz	Indoor unit dimensions (m, kg)				Outdoor condenser dimensions (m, kg)				Indoor unit price (€)	Outdoor condenser price (€)	Note
						Weight	Length	Width	Height	Weight	Length	Width	Height			
280	7,0	1000	90	3,9	400	290	1,10	0,82	1,26	21	0,92	0,24	0,60			
310	8,4	1200		4,6		300				25						
350	9,5	1350		5,2		330				28						
400	12,3	1750		6,6		340				36						
500	15,3	2200	150	7,7		345	1,20	0,77	1,33	41	1,30	0,25	0,77			
700	22,4	3200	200	11,3		350	1,20	0,77	1,56	70	1,60	0,33	0,90			
900	26,8	3850	250	13,1		370	1,20	0,77	1,80	79	1,90	0,50	0,90			
1000	32,2	4600		15		390				90						
1200	39,9	5700	300	18,8		410	1,20	0,77	2,00	132	2,70	0,50	0,90			
1400	44,8	6400		21,1		490	1,20	0,77	2,00	132						
1700	53,6	7700	350	24,7		510	1,20	0,77	2,30	144	3,30	0,70	1,10			
2000	64,4	9250	400	29,7		540	1,20	0,77	2,50	190	4,00	0,70	1,10			
2200	80,0	11500		36,2	560	1,20	0,77	2,50	190	3,60	0,90	1,20				